



# YOUR CREATIVE TRAINING HUB

BEAUTY • WELLNESS • HAIR

**stephanies**<sup>®</sup>  
COLLECTIVE

# LEARN. CREATE. COLLABORATE.

Tailored specifically for the cosmetic and beauty industries, Stephanies Training Hub provides meticulously designed training spaces crafted to accommodate both practical hands-on sessions and in-depth theoretical learning experiences.

Whether you are seeking short-term skill enhancement or embarking on a comprehensive masterclass journey, our facilities are ideal for a range of training needs, including short courses, long-term programs, insightful presentations, and interactive workshops, ensuring every aspect of your educational journey is met with quality and care.



# stephanies<sup>®</sup>

COLLECTIVE





YOUR SPACE TO  
COLLABORATE...



# THEORY ROOM

SEATS UP TO 20 PEOPLE THEATRE STYLE.

## CAPACITY

Theatre: 20  
Classroom: 12  
Boardroom: 10  
Size: 24.5sqm room

## COST

Full Day \$300  
Half Day \$150

## ACCESS

8:30am - 5:00pm  
Monday - Friday

Additional charges may apply outside of these hours.

*Please contact us directly if you require our facilities for public holidays, weekends and evening bookings.*

## INCLUSIONS

- 55" TV screen
- WIFI
- Air Conditioning
- SONOS speakers

## PERFECT FOR

- Theory training
- Presentations
- Meetings
- Collaborations
- Examinations
- Interviews
- Exhibition space

# PRACTICAL TREATMENT ROOM 1

## CAPACITY

Treatment Beds: 3  
Standing Space: 9  
Total Pax: 12  
Size: 22.15sqm room

## COST

Full Day \$250  
Half Day \$180

## ACCESS

8:30am - 5:00pm  
Monday - Friday

Additional charges may apply outside of these hours.

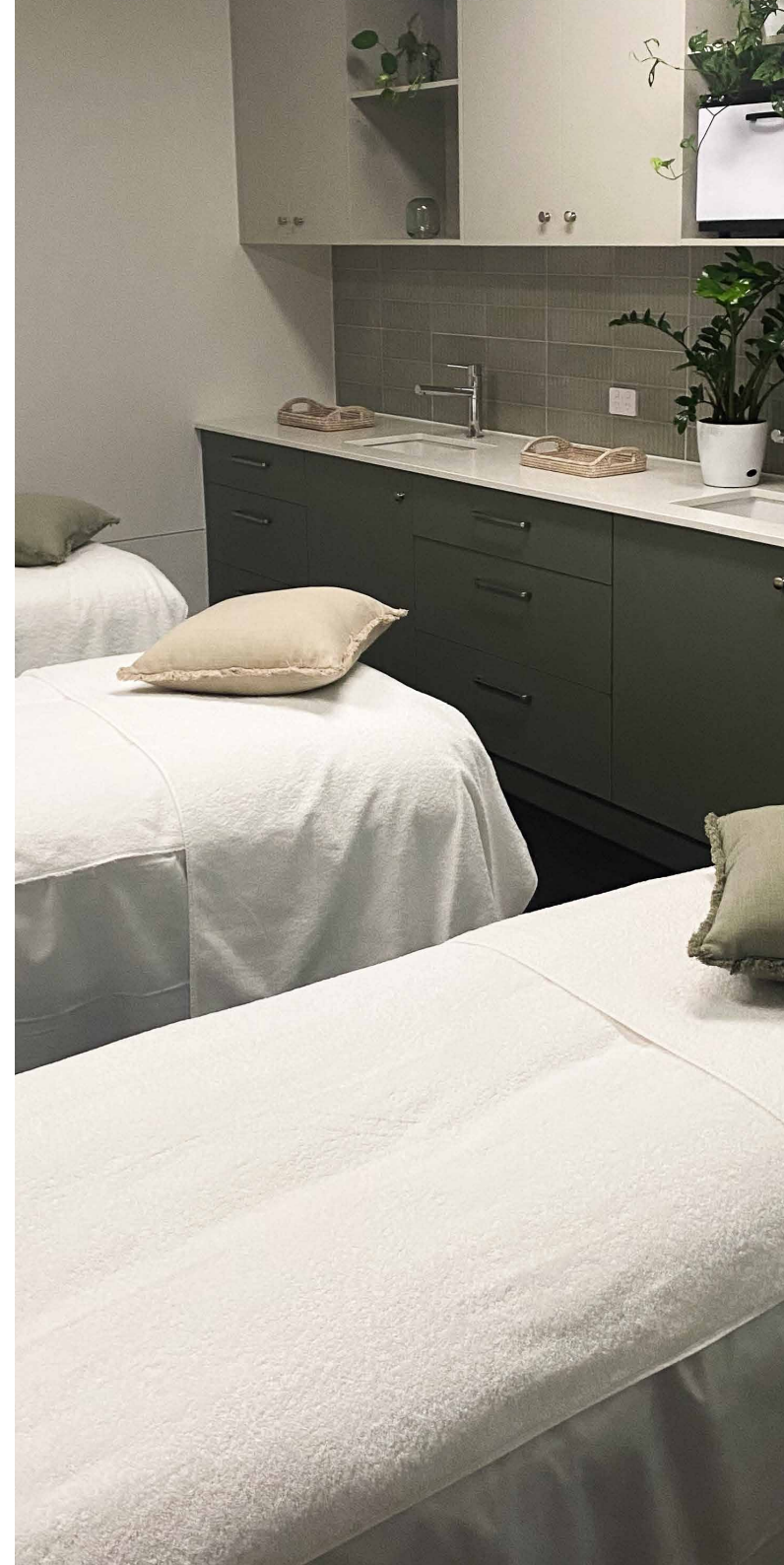
*Please contact us directly if you require our facilities for public holidays, weekends and evening bookings.*

## INCLUSIONS

- 3 Workstations
- Shower facilities
- Hot Towel Cabinets
- Facial Steamers
- Beauty consumables
- Linen
- Dimmable lighting
- WIFI
- Air Conditioning
- SONOS speakers

## PERFECT FOR

- Practical group training
- PR & Product launches
- Photoshoots



# PRACTICAL TREATMENT ROOM 2

## CAPACITY

Treatment Beds: 6  
Standing Space: 18  
Total Pax: 24  
Size: 43.10sqm room

## COST

Full Day \$430  
Half Day \$300

## ACCESS

8:30am - 5:00pm  
Monday - Friday

Additional charges may apply outside of these hours.

*Please contact us directly if you require our facilities for public holidays, weekends and evening bookings.*

## INCLUSIONS

- 6 Workstations
- Hot Towel Cabinets
- Facial Steamers
- Beauty consumables\*
- Linen
- Dimmable lighting
- 55" TV screen
- WIFI
- Air Conditioning
- SONOS speakers

## PERFECT FOR

- PR & Product launches
- Practical group training
- Photoshoots

# THE LOFT

COMMUNAL BREAKOUT SPACE.

## CAPACITY

Seating: 24

Standing Space: 30

Size: 41.15sqm room

## COST

Contact for quote.

## ACCESS

8:30am - 5:00pm

Monday - Friday

Additional charges may apply outside of these hours.

*Please contact us directly if you require our facilities for public holidays, weekends and evening bookings.*

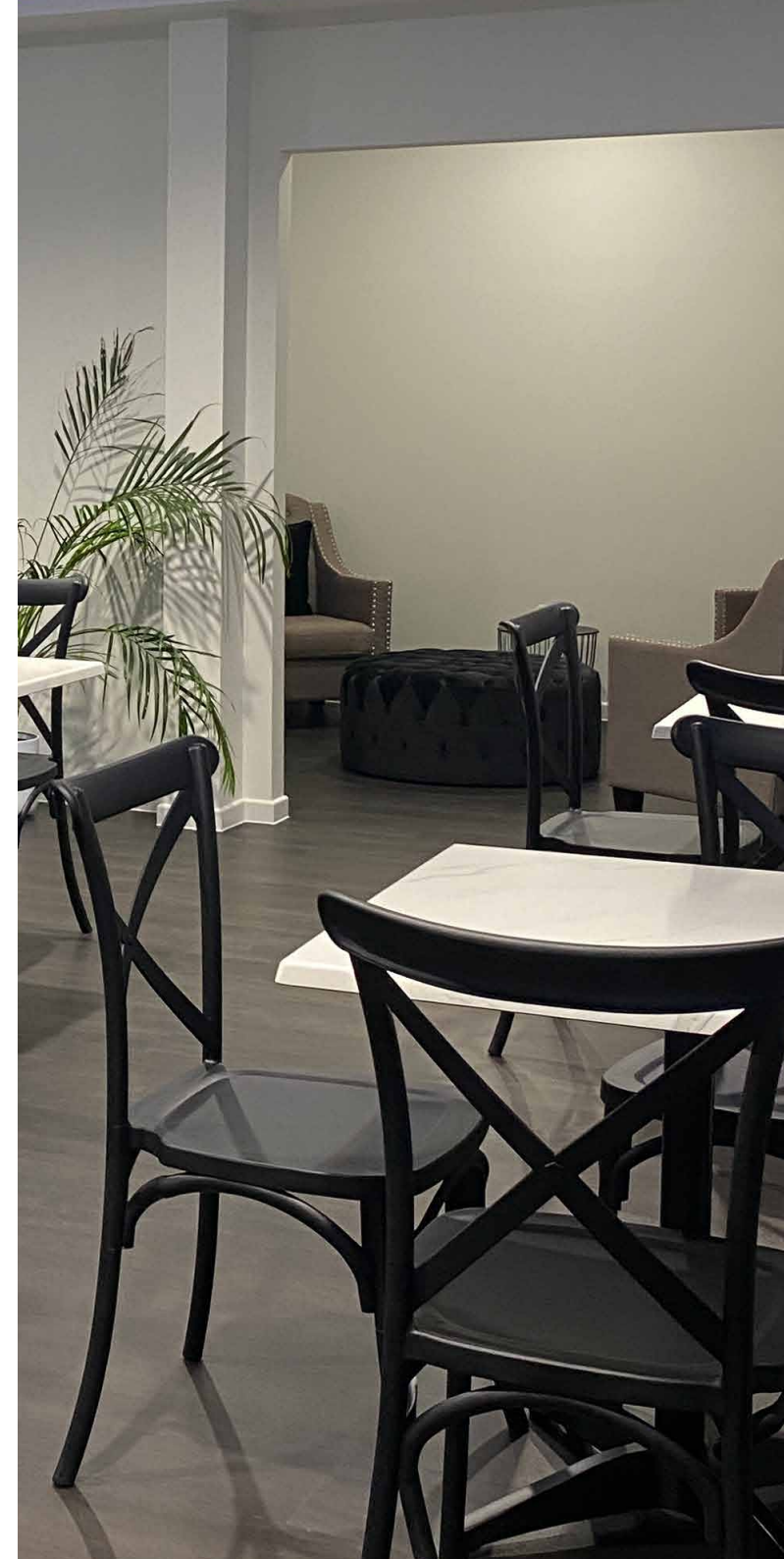
## INCLUSIONS

- Kitchenette with Oven
- Refrigerator
- Dishwasher
- Crockery & Cutlery
- Basic servingware
- Herbal Tea & Water
- 55" TV screen
- WIFI
- Air Conditioning
- SONOS speakers

## PERFECT FOR

- Demonstrations
- Product launches
- PR events
- Photoshoots

Where there are multiple bookings on the same day, the Loft will act as a communal breakout space. Prior notification will be provided.







# INTERVIEW ROOM

## CAPACITY

Seating: 4

Size: 7.45sqm room

## COST

Full Day \$175

Per Hour \$50

## ACCESS

8:30am - 5:00pm

Monday - Friday

Additional charges may apply outside of these hours.

*Please contact us directly if you require our facilities for public holidays, weekends and evening bookings.*

## INCLUSIONS

- WIFI
- Air Conditioning
- 2 Arm Chairs
- Small desk for 2

## PERFECT FOR

- Interviews
- Examinations
- Secretariat

A modern hair studio interior featuring dark wood styling stations with mirrors and green leather chairs. The stations are arranged in a row, each with a large mirror and a dark wood vanity. The chairs are upholstered in a vibrant green leather. The overall aesthetic is clean and contemporary.

HAIR STUDIO  
SHAMPOO LOUNGE & STYLING STATIONS.

# HAIR STUDIO

UP TO 5 DOUBLE SIDED STYLING STATIONS AND 2 SHAMPOO LOUNGES.

## CAPACITY

Shampoo Lounge: 2

Standing Space: 4

Total Pax: 6

Styling Stations: 5 Double sided

Standing Space: 10

Total Pax: 20

Size: 24.5sqm room

## ACCESS

8:30am - 5:00pm

Monday - Friday

Additional charges may apply outside of these hours.

*Please contact us directly if you require our facilities for public holidays, weekends and evening bookings.*

## INCLUSIONS

- 5 Double styling stations
- Ceiling GPO outlets
- 2 Shampoo lounges
- Hairdressing trolleys
- Linen
- 55" TV screen
- WIFI
- Air Conditioning
- SONOS speakers
- Dispensary with sink

## PERFECT FOR

- Group training
- PR & product launches
- Demonstrations

## COST

Full Day \$550

Half Day \$350

## NOTE

Styling stations are mobile and typically occupy our Theory Room. Based on final numbers, this room can be utilised for both theory and practical application. If final numbers are too great, The Loft will act as your theory room.

\*Additional charges may apply

A photograph of a hair studio shampoo lounge. In the foreground, a plush, olive-green leather armchair with a matching ottoman is positioned. The chair has a high back and wide armrests. In the background, a light green cabinet with two drawers and two doors is visible. The drawers have silver handles, and the doors have silver knobs. A white hair salon chair is partially visible in the upper left corner. The overall aesthetic is clean and modern.

# HAIR STUDIO

SHAMPOO LOUNGE.

# MULTI ROOM HIRE

MEDIUM TO LARGE GROUPS.



MULTI ROOM HIRE	HALF DAY	FULL DAY	LINEN
THEORY ROOM + PRACTICAL TREATMENT ROOM 1	\$300	\$500	INCLUDED
THEORY ROOM + PRACTICAL TREATMENT ROOM 2	\$400	\$650	INCLUDED
THEORY ROOM + PRACTICAL TREATMENT ROOM 1 & 2	\$500	\$800	INCLUDED
PRACTICAL TREATMENT ROOM 1 & 2	\$400	\$650	INCLUDED
EXCLUSIVE USE - ALL FACILITIES	N/A	\$1000	INCLUDED

HALF DAY RATE 4 HOURS. ALL PRICES INCLUDE GST.

Where there are multiple bookings on the same day, the Loft will act as a communal breakout space. Prior notification will be provided.

# AUDIO VISUAL

ROOM REQUIREMENTS.





# ROOM REQUIREMENTS

## COMPLIMENTARY

Apple AirPlay

Samsung screen mirroring

HDMI connection

Apple Mini display port to HDMI

Whiteboard with markers

Stationery kit

Videos can be played back using  
Apple TV (format MP4 Quicktime)

Presentation Laser Pointer

*Videos will be required 48 hours prior for loading purposes.*

*Charges may apply for any loss or damages.*

## ADDITIONAL CHARGES APPLY

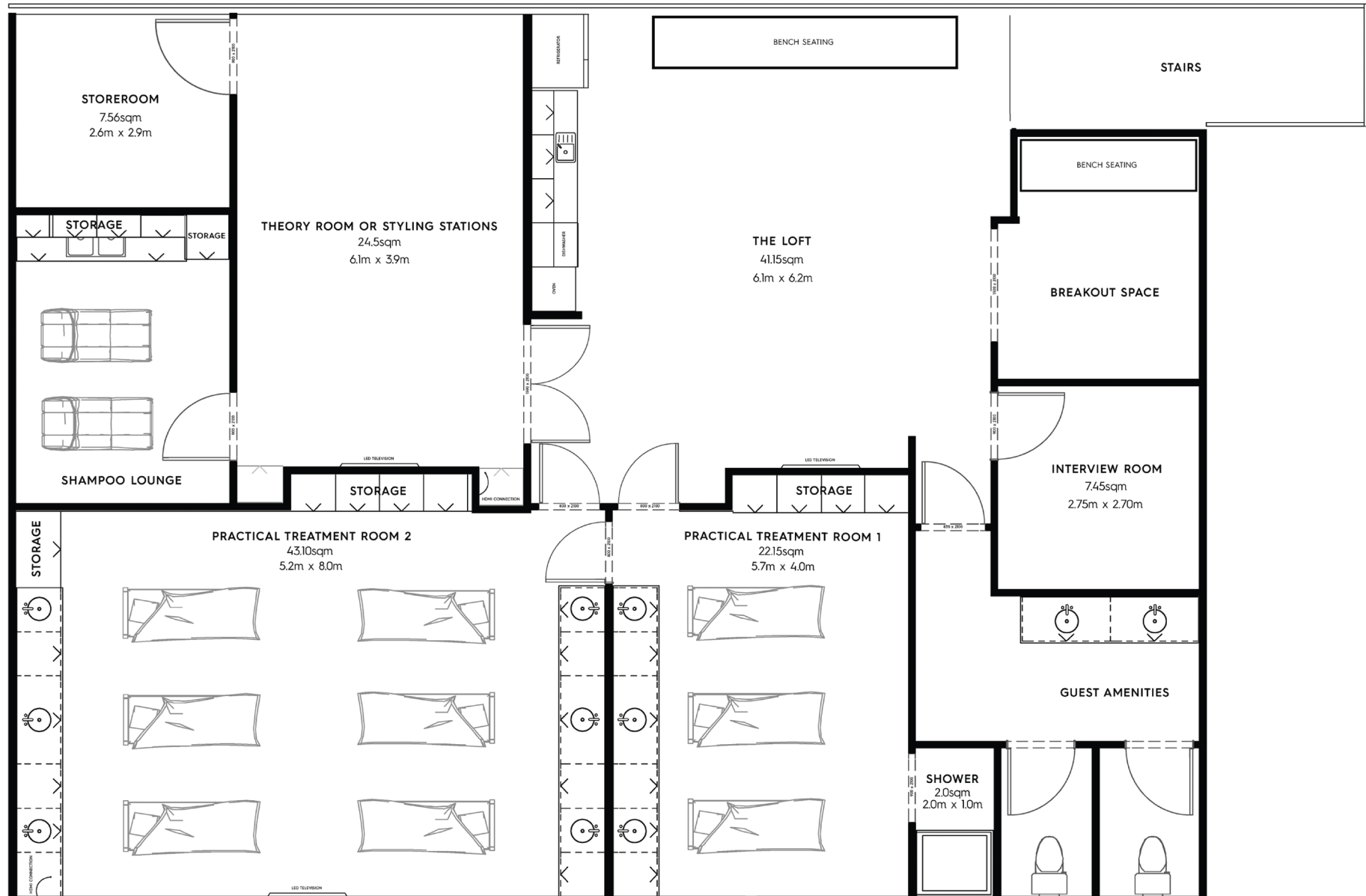
Flip Chart Easel with Paper  
(40 sheets)  
**\$60 / per day**

Additional Flip Chart Paper  
(40 sheets)  
**\$50 / each**

Projector with VGA  
connection  
**\$120 / per day**



# FLOOR PLAN



# REFRESHMENTS

## PLANTWATER

Inspired by nature and conceived from a vision that health and well-being can in fact be convenient. Conscientiously formulated from 17 vitamins and minerals with zero sugar, PlantWater can assist with immunity, energy levels, recovery and cognitive function.

### 17 Vitamins and Minerals

Chlorophyll  
L-Theanine  
Ascorbic Acid (Vitamin C)  
Vitamin B3, B12, B5, B2 & B6  
Vitamin A  
Vitamin E  
Folate (Vitamin B9)  
Vitamin D3  
Thiamine (Vitamin B1)  
Potassium  
Magnesium  
Iron  
Zinc



500ml \$7.00 each

Made to order barista tea & coffee.

### Coffee

Latte	\$4.50
Flat White	\$4.50
Mocha	\$4.50
Long Black	\$4.50
Cappuccino	\$4.50
Espresso	\$2.00
Extra Shot	\$0.80

---

Iced Latte	\$5.50
Iced Mocha	\$5.50

### Milk Alternatives

Soy Milk	\$0.50
Almond Milk	\$0.50
Oat Milk	\$0.50

### Syrups

Vanilla	\$0.50
Caramel	\$0.50

### Tea \$3.50

English Breakfast  
Green Tea

### Complimentary

la Vie elixir Herbal Tea  
Purezza Still Water  
Purezza Sparkling Water



# ACCESSIBILITY

Our training hub is located on the second floor our building and is accessible by stairs only.

# LINEN HIRE

Where linen is not included in your room hire, it can be provided for use in the training rooms. Linen must be placed in the receptacle provided. We will count the linen used and provide you with an invoice after your event.

Bath Sheets	\$1.80	Robes	\$4.50
Face Washers	\$0.25	Bed Sheets	\$3.30
Hand Towels	\$0.75	Facial Towels	\$0.75
Bath Mats	\$1.80		



Experience the luxurious touch of linen sourced from our partner, Wash Lounge Commercial. Discover a visionary approach that seamlessly blends convenience and eco-consciousness with today's modern living. Join Stephanies on a journey towards sustainability as Wash Lounge relentlessly works to reduce their impact and pave the way for a greener future.



MY ALTER EGO CATERING

# CATERING

The Bagel Boys - [thebagelboys.com.au](http://thebagelboys.com.au)

My Alter Ego - [myalterego.com.au](http://myalterego.com.au)

Darvella Patisserie - [darvellapatisserie.com](http://darvellapatisserie.com)

# DINING NEARBY

Dining Precinct on Oxford St, Bulimba 3.5km

# LOCATION & PARKING

Stephanies Collective is conveniently located within close proximity to the Gateway Bridge which provides immediate access to the major arterial roads for South East Queensland.

- Distance from Brisbane CBD 9.8km
- Distance from Domestic and International Airports 10.9km
- Distance from Cannon Hill Train Station 1.3km

Parking is complimentary however subject to availability.

# NEARBY HOTELS

Quest Cannon Hill - 1.6km from Stephanies Collective

930 Wynnum Rd, Cannon Hill QLD 4170

(07) 3556 6000

<https://www.questapartments.com.au/>

Colmslie Hotel - 1.6km from Stephanies Collective

Corner Wynnum, Kates St, Morningside QLD 4170

(07) 3399 8222

<https://www.thecolmsliehotel.com.au/>



COLMSLIE HOTEL



# TERMS & CONDITIONS

- No Smoking permitted within 15 metres of all buildings.
- Premises must be left clean and tidy prior to leaving.  
If cleaning is required a fee of \$100 may apply.
- Any equipment and property damage must be reported immediately. Breakages and missing items may be the responsibility of the party hiring the premises.
- Personal injury must be reported as soon as it occurs and an incident form must be completed at the time.
- All prices quoted are inclusive of GST.
- Booking will be deemed confirmed upon completion of signed terms and conditions and 50% deposit being received.

Stephanies reserves the right to change prices or any other charges at any time.  
We will provide you with at least 30 days notice in writing before changing.

## PUBLIC LIABILITY INSURANCE

- All hirers must provide a Certificate of Currency of their Public Liability Insurance prior to the event to the value of \$20million.
- Regular Hirers must supply a copy of their renewal each year.
- All hirers must have a cover to a level of not less than \$20million indemnifying Stephanies Spa Lounge Pty Ltd.
- Use of the facility will not be allowed if a copy of the insurance is not produced before the event.

## CANCELLATION POLICY

- Where a cancellation is received 14 days prior to the event date, 50% of the total hire fee will be charged.
- Where a cancellation is received 7 days prior to the event date, 100% of the total hire fee will be charged.
- Bookings made within a 7 day period that are cancelled will incur a cancellation fee of 100% of the hire charges.

# CONTACT US

PHONE: 1300 DAY SPA

WEBSITE: [stephanies.com.au](http://stephanies.com.au)

EMAIL: [meet@stephanies.com.au](mailto:meet@stephanies.com.au)

